

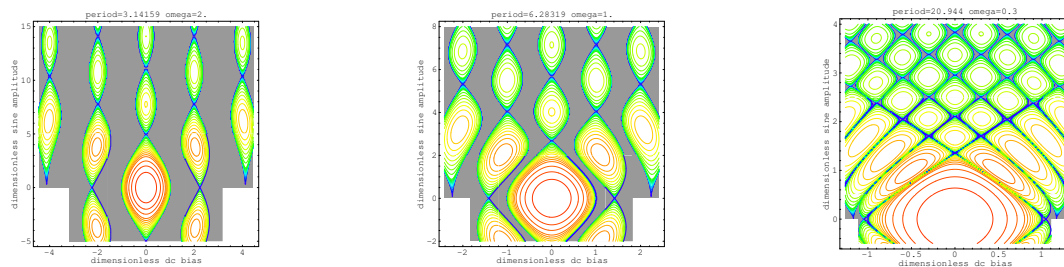
MSC2020 92E99

Dynamical systems on \mathbb{T}^2 modeling Josephson junction isomonodromic deformations and Painlevé 3 equations*

Yulia Bibilo^{1, 2}, Alexey Glutsyuk^{3, 4}

University of Toronto at Mississauga¹, Institute for Information Transmission Problems², CNRS³, HSE University⁴

The tunneling effect predicted by B. Josephson (Nobel Prize, 1973) concerns the Josephson junction: two superconductors separated by a narrow dielectric. It states existence of a supercurrent through it and equations governing it. The *overdamped Josephson junction* is modeled by a family of differential equations on 2-torus depending on 3 parameters: B (abscissa), A (ordinate), ω (frequency). We study its *rotation number* $\rho(B, A; \omega)$ as a function of (B, A) with fixed ω . The *phase-lock areas* are the level sets $L_r := \{\rho = r\}$ with non-empty interiors; they exist for $r \in \mathbb{Z}$ [1]. They are analogues of the famous Arnold tongues. Each L_r is an infinite chain of domains going vertically to infinity and separated by points called *constrictions* (except for those with $A = 0$). See the figures below for $\omega = 2, 1, 0.3$.



We show [2] that: 1) *all constrictions in L_r lie in the vertical line $\{B = \omega r\}$* ; 2) *each constriction is positive*: some its punctured neighborhood in the vertical line lies in $\text{Int}(L_r)$. These results confirm experiences of physicists (pictures from physical books of 1970-th) and two mathematical conjectures.

The proof uses an equivalent description of model by linear systems of differential equations on $\overline{\mathbb{C}}$ [1], their isomonodromic deformations described by Painlevé 3 equations and methods of theory of slow-fast systems.

References

1. Buchstaber V.M., Karpov O.V., Tertychnyi S.I. The rotation number quantization effect. Theoret and Math. Phys. 2010. Vol. 162, No. 2, pp. 211–221.
2. Bibilo Yu., Glutsyuk A. On families of constrictions in model of overdamped Josephson junction and Painlevé 3 equation. Preprint. 2021. URL: <https://arxiv.org/abs/2011.07839>

*Research of A.Glutsyuk is supported by RSF grant No 18-41-05003